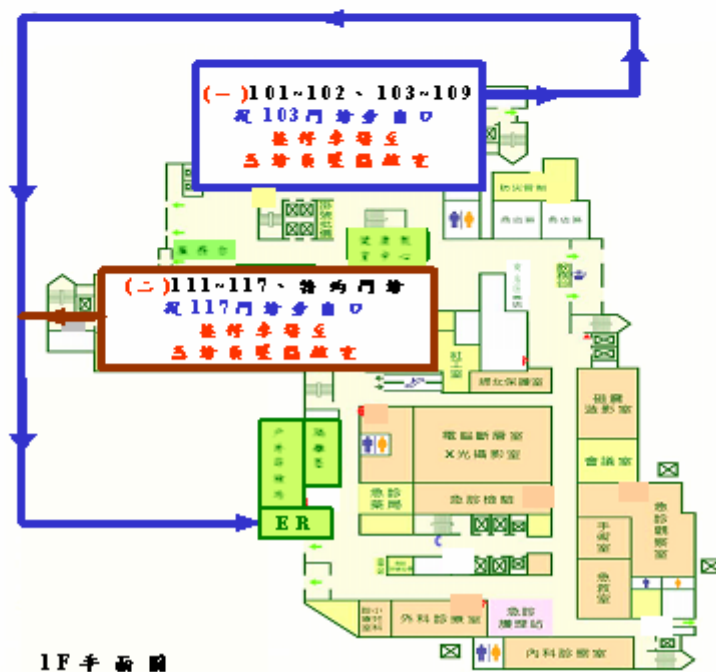
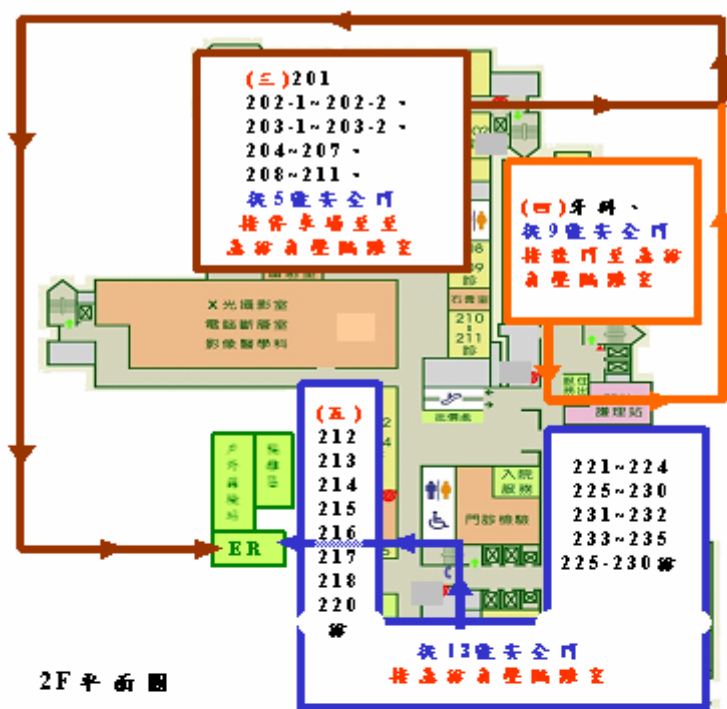
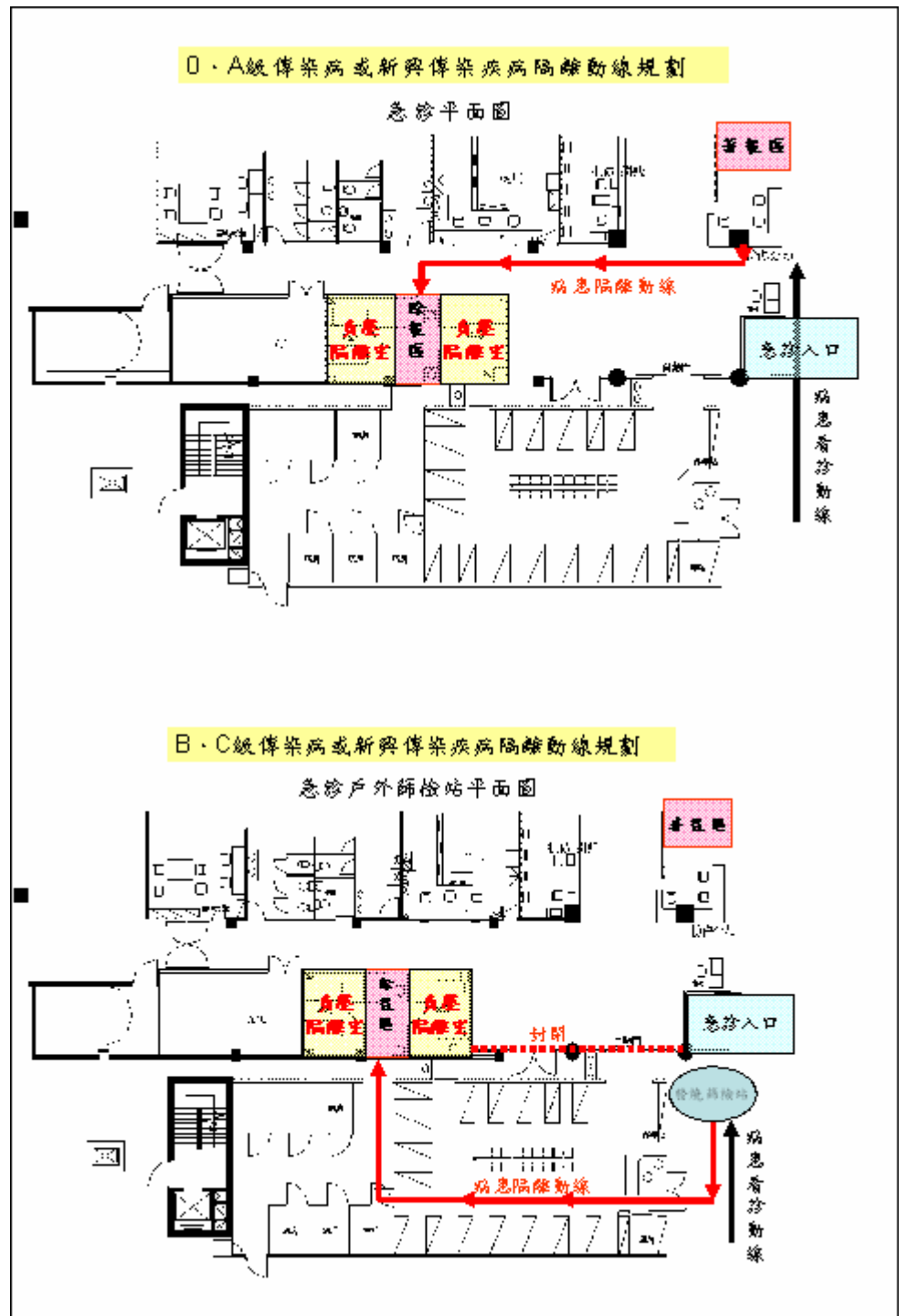


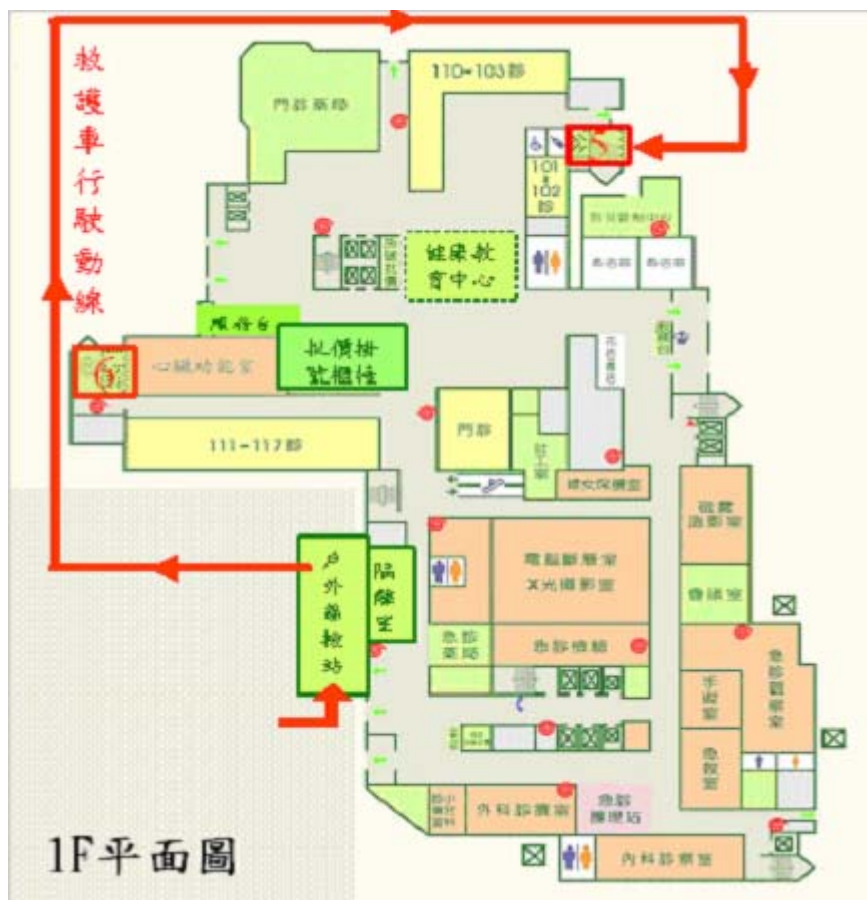
門診轉送急診動線



進入急診負壓隔離室(戶外篩檢站-急診第三觀察室) 動線

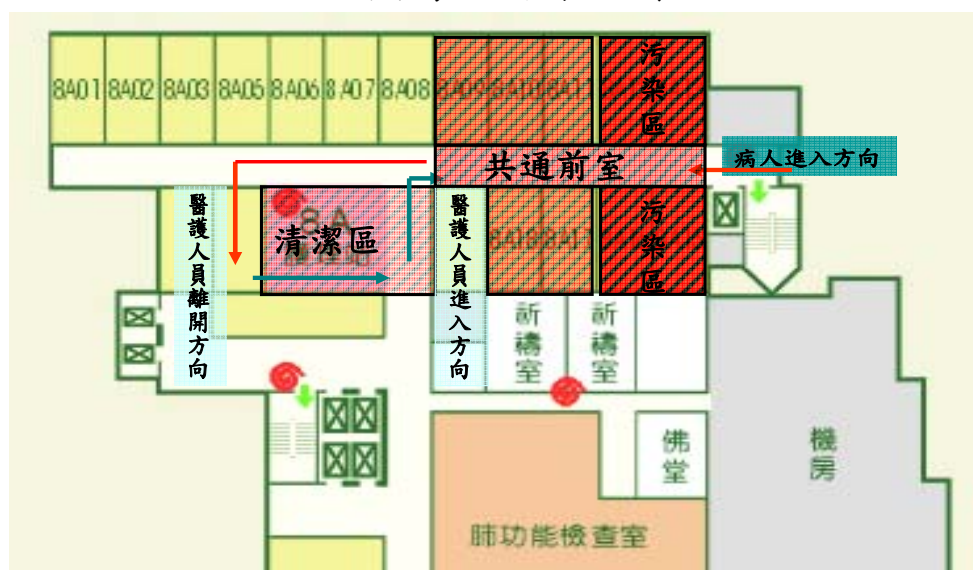


戶外篩檢站-急診第三觀察室進入 8A 負壓隔離病房動線

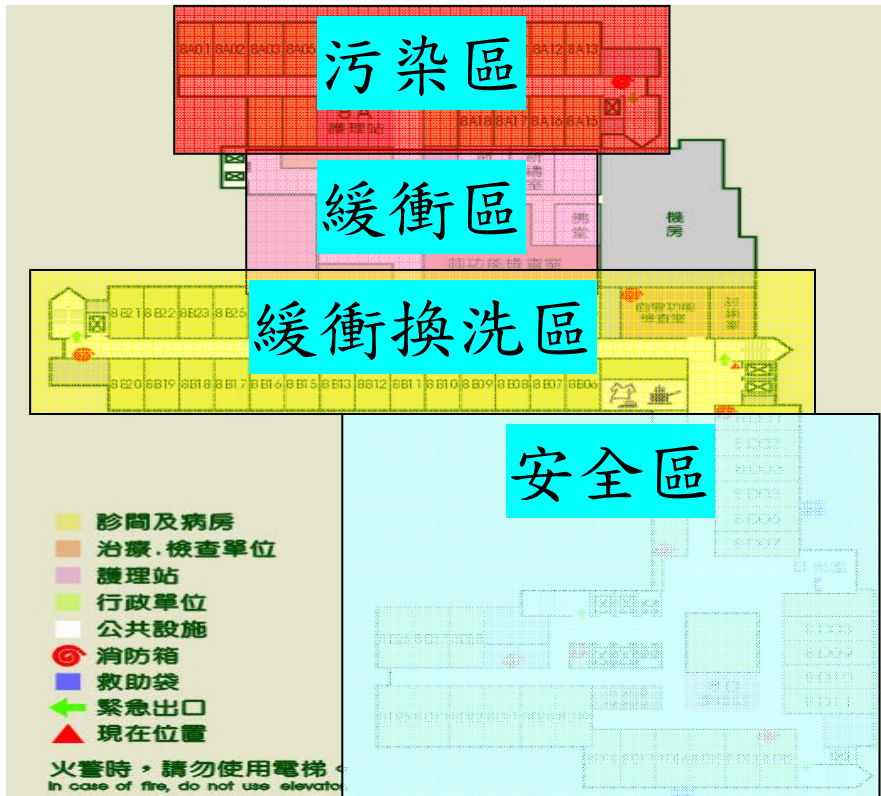


8A 房動病線

8A 病房的動線規劃



Step 1：徵收 A 區病房



Step 2：徵收 A、B 區病房

